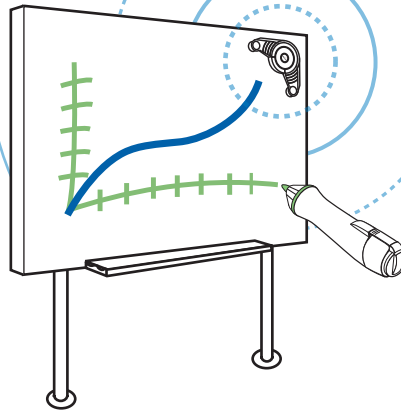
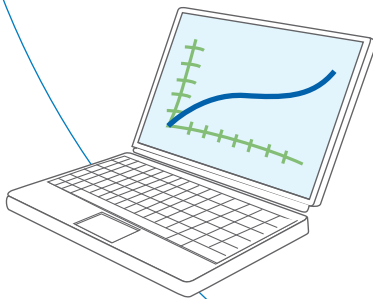
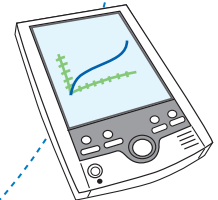
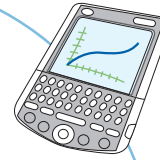


eBeam[®] wireless

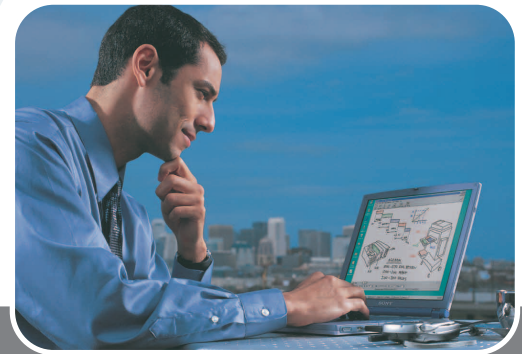
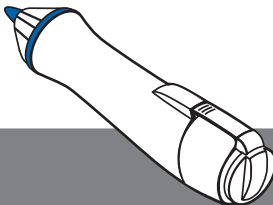


 **Bluetooth[®]**



eBeam is the ultimate wireless communication and presentation technology for presenters, consultants, administrators and educators. The wireless eBeam System 3 (USB and Bluetooth) allows users to connect their Bluetooth-enabled PC or Macintosh Computer as well as their Palm or PocketPC handheld wirelessly to any standard whiteboard.

Save handwritten notes, share images and drawings over the Internet or connect a projector and transform your whiteboard into an interactive touch screen. eBeam does it all!



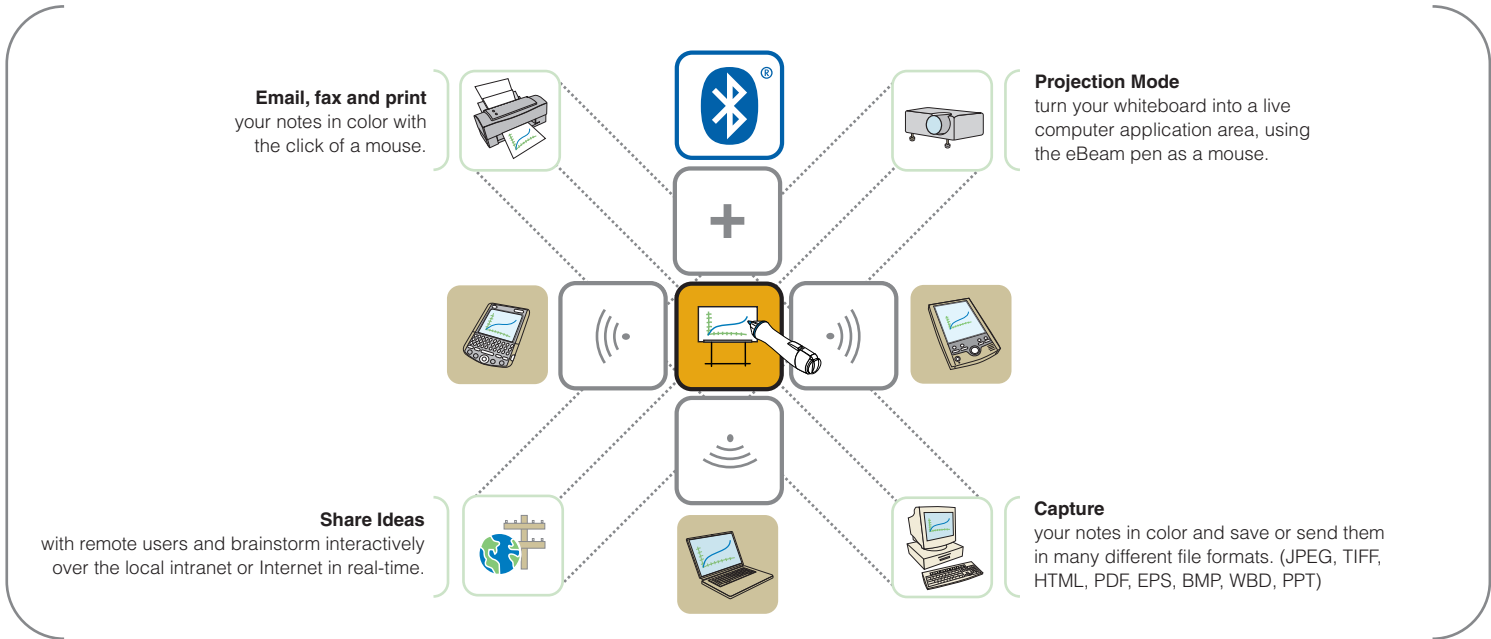




Unleash Your Creativity

www.e-beam.com

Luidia 



Bluetooth®

What is Bluetooth? Bluetooth is a radio technology developed to deliver short-range wireless mobility. Bluetooth technology eliminates cables, wires, and cords between devices such as your computer and input systems like eBeam. Bluetooth enables communication between devices that are in close proximity (up to 30ft) to one another. Bluetooth facilitates fast, low-powered, secure transmission of data, even when the devices are not in line-of-sight. For more information visit www.bluetooth.com

Bluetooth Certification

- FCC: Part 15, Class B
- Bluetooth 1.1
- Frequency: 2.4GHz
- Serial Protocol

Radio Range

- Up to 30 ft (10 m)

eBeam System Performance:

- Active area: 1.7' x 1.1' (0.43m x 0.28m) minimum, up to 8' x 4' (2.40m x 1.20m) maximum [equivalent to 107" diagonal]
- Positional resolution: +/- 1.5mm

www.e-beam.com

Contact your local eBeam reseller:



Interactive Product Development

eBeam System Components

- One (1) eBeam System 3 USB/bluetooth receiver
- One (1) USB Bluetooth adapter w/software
- Four (4) eBeam marker sleeves
- Four (4) dry-erase markers
- One (1) electronic eraser
- One (1) function strip
- Ten (10) CR2032 batteries
- One (1) CD with eBeam software for PC, Mac, Palm, and PocketPC Product documentation
- One (1) 15' (5m) USB cable
- One (1) USB to power adapter
- One (1) 6' (1.8m) auto-switching power cable with international travel adapters

Minimum System Requirements

- Power Macintosh®
- Mac® OS X v.10.2x or higher
- 10 MB available hard drive space
- Bluetooth enabled for wireless connection or available USB port for direct-connection
- Windows® - compatible PC with Pentium™ II 400 MHz+ processor
- Windows 98SE, ME, 2000, and XP compatible
- 10 MB available hard drive space
- Bluetooth enabled for wireless connection or available USB port for direct-connection
- Palm OS 4.0 or higher
- 400K available memory
- Bluetooth enabled
- PocketPC 2002 or later
- 600K available memory
- Bluetooth enabled



Warranty

One year limited warranty on hardware and software.